



Burt Lake Watershed Property Owners' Permit Guide

(Cheboygan and Emmet Counties)

Attention All Burt Lake Watershed Property Owners:

If you have plans to build, drill or fill there are some things you should know before you begin. Many home improvement activities are regulated by local, state or federal agencies. As a result, a review process and permits are often required before work begins. This process can be confusing for the homeowner seeking answers. To help you navigate through the right channels, we offer this resource to set you on your course toward achieving your property goals.

If any of the following activities are included in your future plans for your property in Cheboygan or Emmet County, learn now what steps you will need to take.

Regulated activities on private property include:

- Building a new home
- Modifying an existing home (expanding or building an addition)
- Installing a new septic system
- Repairing an existing septic system
- Excavating earth within 500 feet of a lake or stream or if an earth change will disturb an acre or more of land (regardless of distance to lake or stream)
- Filling, excavating or draining a wetland
- Locating structures in a wetland

Most activities along the shoreline below the Ordinary High Water Mark (OHWM)* will require a permit. This guide provides the most current information on activities that require a permit and contact information for the appropriate regulators.



As a Northern Michigan resident, you are surrounded by our beautiful natural resources every day. Preserving the character and quality of the land and water is very likely important to you. Regulations are intended to protect water resources, as well as neighboring properties. Activities inconsistent with permitted uses threaten the immediate and future health of these resources. By observing standards established in local ordinances, you can do your part to protect the waters of Burt Lake and the Burt Lake Watershed.

A healthy watershed depends on sound and responsible land use. The presence of pollutants anywhere within the Watershed can easily end up in Burt Lake and its connecting waters. Land directly adjacent to a lake as well as land several miles from a lake or stream can contribute nonpoint source pollution in the form of excess sediment, nutrients, toxic chemicals, and/or bacteria. Bit by bit, nonpoint source pollution can not only harm fish and wildlife habitat but also degrade the recreational quality of Burt Lake and its tributaries.

Construction activities within the Watershed can have a significant impact on water quality. The removal of vegetation, excavation of earth, and alteration of waterways can have a negative impact if conducted without the benefit of a professional review and permitting process.

*"Ordinary High Water Mark" (OHWM) means the line between upland and bottomland that persists through successive changes in water levels, below which the presence and action of the water is so common or recurrent that the character of the land is marked distinctly from the upland and is apparent in the soil itself, the configuration of the surface of the soil, and the vegetation. On an inland lake that has a level established by law, it means the high established level. The OHWM is oftentimes higher than lake levels.

If you plan to build a new building or modify any existing structure, you will need one or more of the following:

Health Department Permit

The District Health Department #4 (Cheboygan County) and the Health Department of Northwest Michigan (Emmet County) issues permits for wells and on-site sewage disposal systems such as septic systems. Permits are issued when requirements of the County Sanitary Codes are met. Code provisions concerning isolation distances from the water table, streams and lakes, and water supply wells are particularly important for water quality protection.

District Health Department #4 (Cheboygan County)
Phone: 231-627-8850
Website: <http://www.dhd4.org>

Health Department of Northwest Michigan
(Emmet Office)
Phone: 231-347-6014
Website: <http://nwhealth.org>

Soil Erosion and Sedimentation Control Permit (Act 451, Part 91)

The County Planning and Zoning Departments issue permits for any earth changes which disturb one or more acres of land and changes which are within 500 feet of any lake or stream. Provisions concerning soil erosion are particularly important for water quality protection.

Cheboygan County Planning and Zoning Department
Phone: 231-627-8489
Website: http://www.cheboygancounty.net/pages/planning__zoning1

Emmet County Office of Planning, Zoning and Construction Resources
Phone: 231-348-1735
Website: <http://www.emmet.mi.us/planzone/default.htm>



Zoning Permit

Townships require a zoning permit to verify proposed construction activities are consistent with their zoning ordinance. All of Cheboygan and Emmet counties townships within the Burt Lake Watershed are zoned through their respective counties, with the exception of Burt Township (Cheboygan County) and Little Traverse and Pleasantview Townships (Emmet County) that have their own ordinances. Greenbelts and building setbacks, which dictate the restrictions on activities within a specified distance of the lake, are particularly important for water quality protection.

Cheboygan County Planning and Zoning Department

Phone: 231-627-8489
Website: http://www.cheboygancounty.net/pages/planning__zoning1

Burt Township

Daniel Swantek, Zoning Administrator
Phone: 231-238-4818
Website: <http://www.burttownship.org>

Emmet County Planning, Zoning, and Construction Resources

Brentt Michalek, County Zoning Administrator
Phone: 231-348-1735
Website: <http://www.emmet.mi.us/planzone/default.htm>

Little Traverse Township

William Dohm, Zoning Administrator
Phone: 231-526-0351

Pleasantview Township

Jack Somerville, Zoning Administrator
Phone: 231-526-2739

**Please note: The contact information may change. Please call your Township Supervisor if you are unable to reach your Zoning Administrator.

Building Permit

The Cheboygan and Emmet County Building Departments issue permits to construct, utilize or occupy new or modified structures.

Cheboygan County Department of Building Safety

Phone: 231-627-8813
Website: http://www.cheboygancounty.net/pages/costruction_code

Emmet County Planning, Zoning, and Construction Resources

Phone: 231-348-1735
Website: <http://www.emmet.mi.us/planzone/default.htm>



If you plan to dig, fill, drain, or build in a wetland, you will need the following:

If you plan to install, repair, or enlarge a septic system, you will need the following:

Wetland Protection Permit: A Joint Michigan Department of Environmental Quality (MDEQ) & U.S. Army Corps of Engineers (ACOE) permit.

Wetlands located within 500 feet of a lake or stream or within 1000 feet of the Great Lakes are regulated by the Wetland Protection Act, Part 303 of the Natural Resources and Environmental Protection Act (NREPA) (Act 451 of 1994). Any activity that could compromise the ecological integrity of a wetland must first be carefully evaluated. MDEQ staff stress optimum utilization of upland areas first, and then minimizing wetland impacts if the wetland activity is necessary. Oftentimes, permits are denied if viable alternatives are available. Wetlands are extremely valuable resources. Protecting wetlands helps protect the water quality of the Burt Lake Watershed.

Health Department Permit

The District Health Department #4 (Cheboygan County) and the Health Department of Northwest Michigan (Emmet County) issue permits for on-site sewage disposal systems when requirements of the county sanitary codes are met. Code provisions concerning isolation distances from the water table, streams and lakes, and water supply wells are particularly important for water quality protection.

Michigan Department of Environmental Quality
 Land and Water Management Division (LWMD)
 Gaylord Field Office (Cheboygan and Emmet Counties)
 Phone: 989-731-4920

MDEQ Wetlands Protection Program
http://www.michigan.gov/deq/0,1607,7-135-3313_3687---,00.html

District Health Department #4 (Cheboygan County)
 Phone: 231-627-8850
 Website: <http://www.dhd4.org>

Health Department of Northwest Michigan
 (Emmet Office)
 Phone: 231-347-6014
 Website: <http://nwhealth.org>

If you plan to move or fill earth within 500 feet of the lake, or if the earth change will disturb an acre or more of land, you will need the following:

Soil Erosion and Sedimentation Control Permit (Act 451, Part 91)

The County Planning and Zoning Departments issue permits for any earth changes which disturb one or more acres of land and changes which are within 500 feet of any lake or stream. Provisions concerning soil erosion are particularly important for water quality protection.

Soil Erosion and Sedimentation Control Permit (Act 451, Part 91)

The County Planning and Zoning Departments issue permits for any earth changes which disturb one or more acres of land and changes which are within 500 feet of any lake or stream. Provisions concerning soil erosion are particularly important for water quality protection.

Cheboygan County Planning and Zoning Department
 Phone: 231-627-8489
 Website: http://www.cheboygancounty.net/pages/planning__zoning1

Cheboygan County Planning and Zoning Department
 Phone: 231-627-8489
 Website: http://www.cheboygancounty.net/pages/planning__zoning1

Emmet County Office of Planning, Zoning and Construction Resources
 Phone: 231-348-1735
 Website: <http://www.emmet.mi.us/planzone/default.htm>

Emmet County Office of Planning, Zoning and Construction Resources
 Phone: 231-348-1735
 Website: <http://www.emmet.mi.us/planzone/default.htm>

If you plan to do anything along the shoreline below the Ordinary High Water Mark (OHWM) you will need the following:

Part 301, Inland Lakes and Streams Permit

The Michigan Department of Environmental Quality (MDEQ) regulates any shoreline activity that occurs below the Ordinary High Water Mark (OHWM) (see definition on front cover) under the authority of Part 301, Inland Lakes and Streams of the Natural Resources and Environmental Protection Act, 1994 PA 451, as amended (NREPA). This applies to construction, dredging, or filling of any part of a lake or riverbed, including the deposit or installation of materials along the shoreline, such as sand, rip rap, a breakwater, or a permanent dock. It also applies to the alteration of the natural flow of an inland lake or stream, activities within bottomlands, and connection of any natural or artificially constructed waterway, pond or lake with an existing inland lake or stream. Protection of the shoreline is critical to preserving the water quality. Degraded shorelines can result in soil erosion and sedimentation problems.

Michigan Department of Environmental Quality
Land and Water Management Division (LWMD)
Gaylord Field Office (Cheboygan and Emmet Counties)
Phone: 989-731-4920

MDEQ Inland Lakes and Streams Program
http://www.michigan.gov/deq/0,1607,7-135-3313_3681_28734---,00.html

Other Important Contacts

Cheboygan County

Tuscarora Township (Indian River)	231-238-0970
Village of Wolverine	231-525-6656
City of Cheboygan Zoning and Planning Department	231-627-9931
Cheboygan Conservation District	231-627-3383
Michigan State University Extension (Cheboygan County)	231-627-8815

Emmet County

Village of Alanson	231-548-5431
Village of Pellston	231-539-7355
Emmet Conservation District	231-439-8996
Michigan State University Extension (Emmet County)	231-348-1770



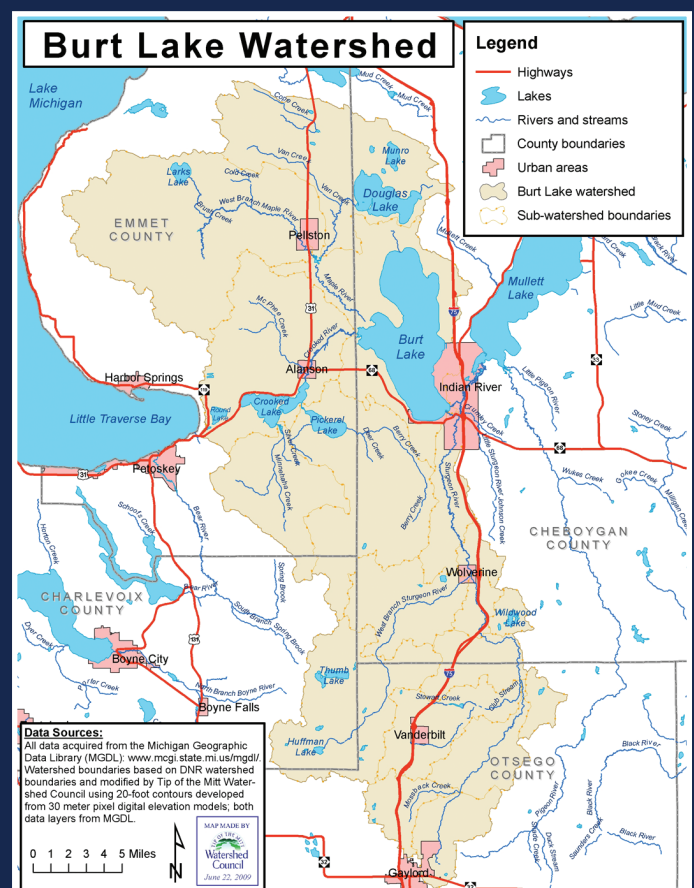
P. O. Box 632
Indian River, MI 49749
(231) 238-8426
www.blpa.org



426 Bay Street
Petoskey, MI 49770
(231) 347-1181
www.watershedcouncil.org

Top 10 Every Day Things You Can Do to Help Water Quality

- Avoid using pesticides.
- Avoid using fertilizers, but if you do use them, apply the proper formula and amount.
- Allow your grass to grow taller (at least 3 inches) and leave grass clippings on the lawn.
- Dispose of household hazardous waste at appropriate collection sites.
- Cover exposed soil with plants, seed or mulch.
- Repair fluid leaks in cars and other vehicles.
- Compost your yard waste.
- Dispose of pet waste regularly.
- Wash your vehicle on a grassy lawn instead of a driveway.
- Don't hose off your driveway, and sweep dirt and debris back onto your yard.



THE BURT LAKE WATERSHED

A watershed is the land area surrounding a body of water that when it rains or the snow melts, it all drains to that water body. The Burt Lake Watershed is one of the many smaller subwatersheds within the larger Cheboygan River Watershed. The Burt Lake Watershed is more than 250,000 acres contained primarily within Cheboygan and Emmet Counties, although it does reach into portions of Charlevoix and Otsego Counties. Burt Lake is part of northern Michigan's famed Inland Waterway and is the state's fourth largest inland lake, at 17,000 acres and with 30 miles of shoreline. The Burt Lake Watershed is also home to a wealth of other water resources including Douglas Lake, Munro Lake, Larks Lake, Crooked River, the blue ribbon trout streams of the Maple River and the Sturgeon River, and several additional small lakes, streams, and wetlands.